

# Server-side Installation or Upgrade – WFM 20.2

## Prerequisites

1. Remove Transaction FM 10.5 and all earlier versions. Refer to the following folder:  
/RemoveOldTransactionFMs/
2. Remove all prior versions of server-side Query (WINSHTLQ component). If WINSHTLQ exists, use the document in the **Upgrade** folder to implement FM side functionality 20.2 for Studio.
3. Ensure that you import the current SPAM/SAINT update (version 0053 or later for SAP NetWeaver 2004s). To confirm the version, compare the short text of the last imported SPAM/SAINT update (SAPKD\*) with the short text of the SPAM/SAINT update in the SAP Service Marketplace. If the SAP Service Marketplace contains a more current version, import the new SPAM/SAINT update. For more information, please see SAP note [19466](#).
4. The transport tool TP has at least version 380.07.22. Use a kernel with release 7.20 at a minimum. The transport tool R3trans includes version AUG/06/2013 at the earliest.
5. Ensure that your system has at least 5MB available in the transport directory.

## Prepare for the Installation or Upgrade

To load the package with the add-on installation tool from the application server, follow these steps:

1. Log on as user:  
<sid>adm to UNIX  
<SID>OFR to AS/400 (IBM eServer iSeries)  
<SID>adm to Windows NT
2. Change to the transport directory of your SAP System. The transport directory also appears under the name Transaction AL11 under DIR\_TRANS.
3. Change to the EPS directory, and then change to the “in” directory.
4. Extract SAR Files given In WNCNNxIU.SAR Format (where ‘**NNx**’ represent the **Winshuttle Function Module** version, with ‘**NN**’ being a two-digit number and ‘**x**’ being a one-digit number) with the latest version of the SAPCAR tool. It will extract into a <>.PAT file. Copy the <>.PAT file to the “in” directory.

### Reference Table for Released Winshuttle SAR File Number - for the Respective SAP System

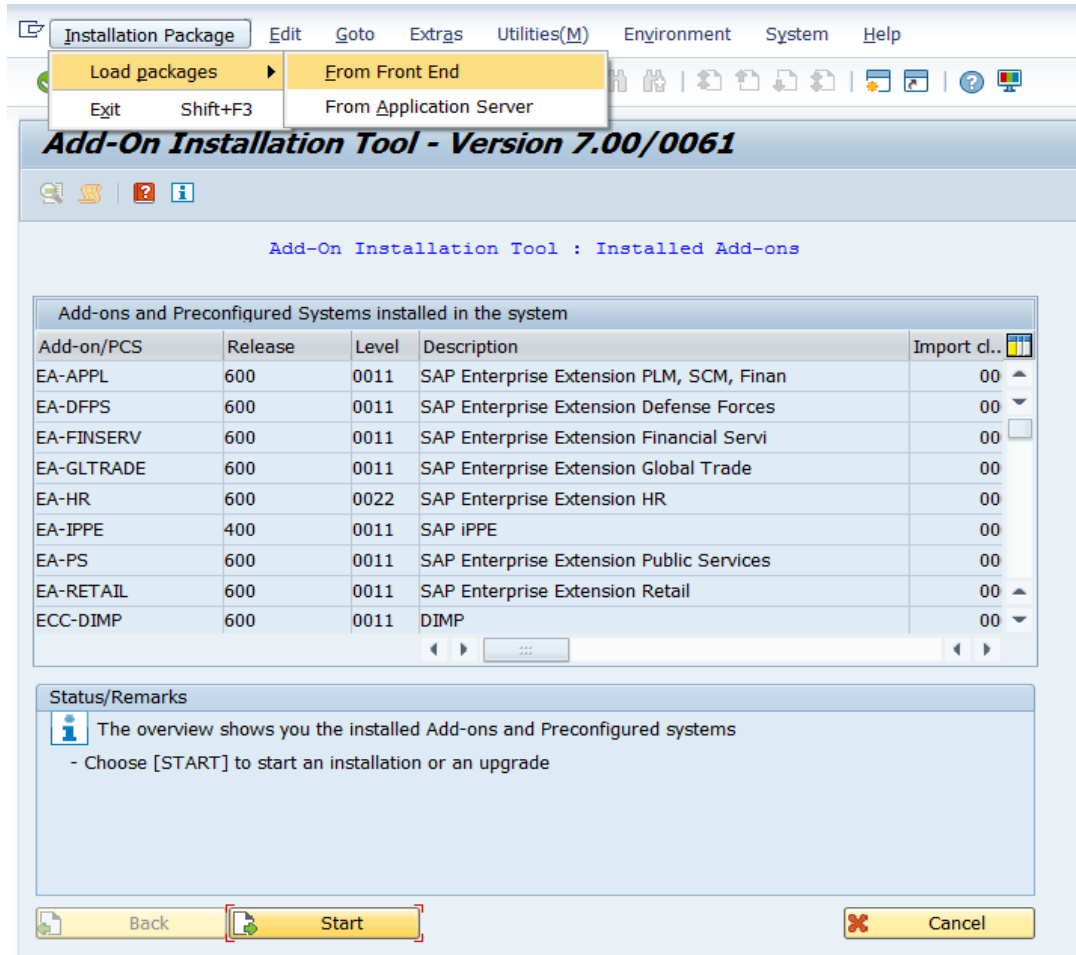
WNC <b>NNx</b> IU.SAR version	SAP System Version
WNC <b>11C</b> IU.SAR	ERP6-70x-731 or ERP6-740-750
WNC <b>71C</b> IU.SAR	ERP6-730
WNC <b>41C</b> IU.SAR	ERP6-710-711
WNC <b>91C</b> IU.SAR	NW(APO)-70x-731-740-750
WNC <b>75C</b> IU.SAR	S4 HANA-1610-751
WNC <b>76C</b> IU.SAR	S4 HANA-1709-752
WNC <b>77C</b> IU.SAR	S4 HANA-1809-753
WNC <b>96C</b> IU.SAR	NW 740-750-751-752-753
WNC <b>78C</b> IU.SAR	S4 HANA-1909-754
WNC <b>82A</b> IU.SAR	S4 HANA-2020-755

To load the package directly from the front-end, ensure that you have the latest version of the SAPCAR tool available in the SAP server.

## Execute the Installation or Upgrade

1. Log on to your SAP System in client 000 as a user with SAP\_ALL-authorization. Do NOT use user SAP\* or DDIC.

To start the installation or upgrade, call the add-on installation tool transaction code SAINT.



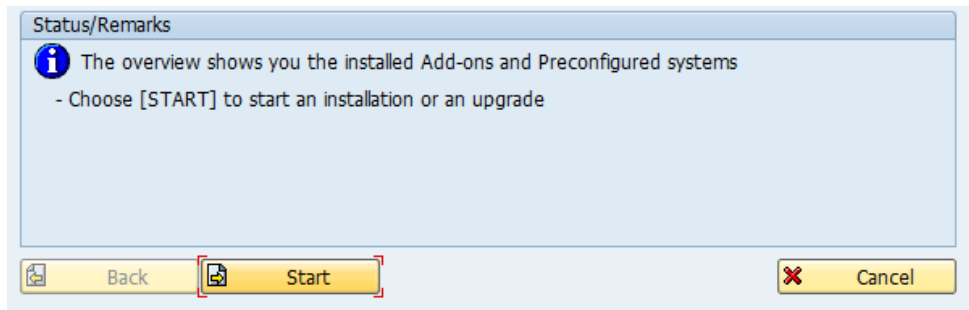
In SAINT from Menu

Installation Package > Load Packages > Front End

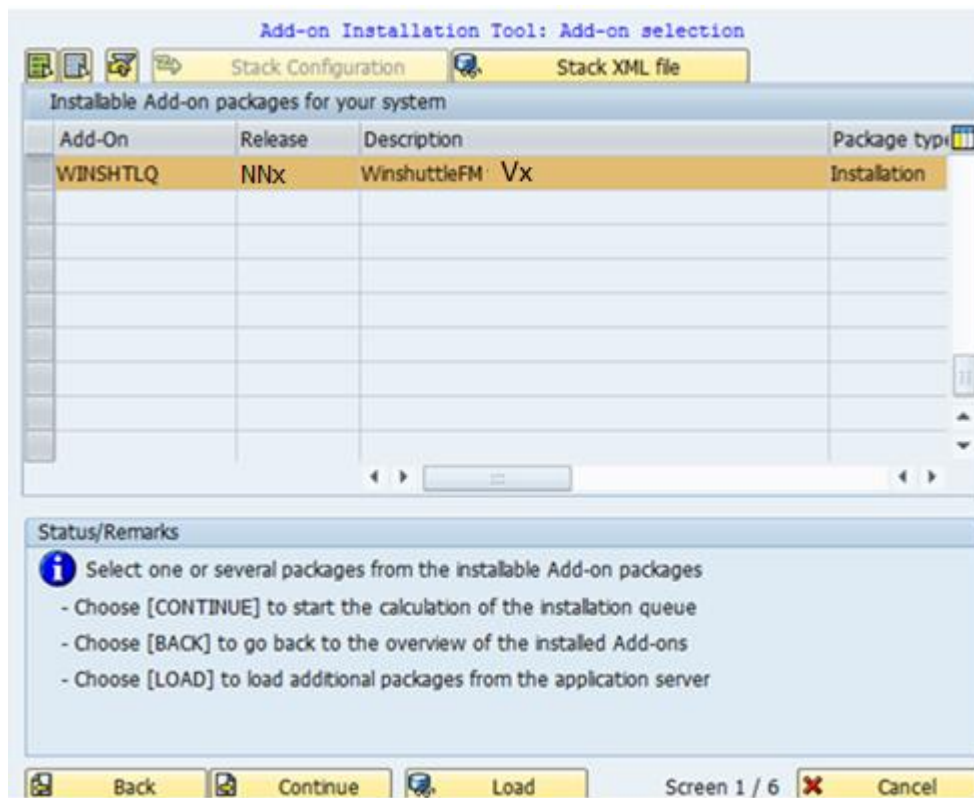
Upload file WNCNNxIU.SAR

Decompress to <>.PAT file

After upload and decompress.

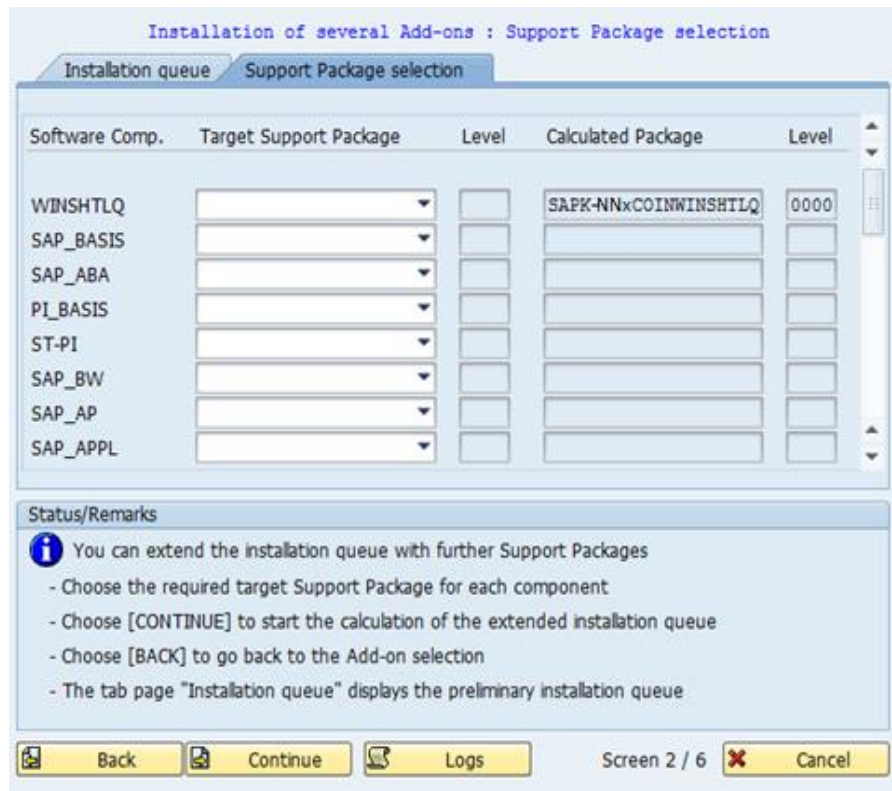


Click **Start**.

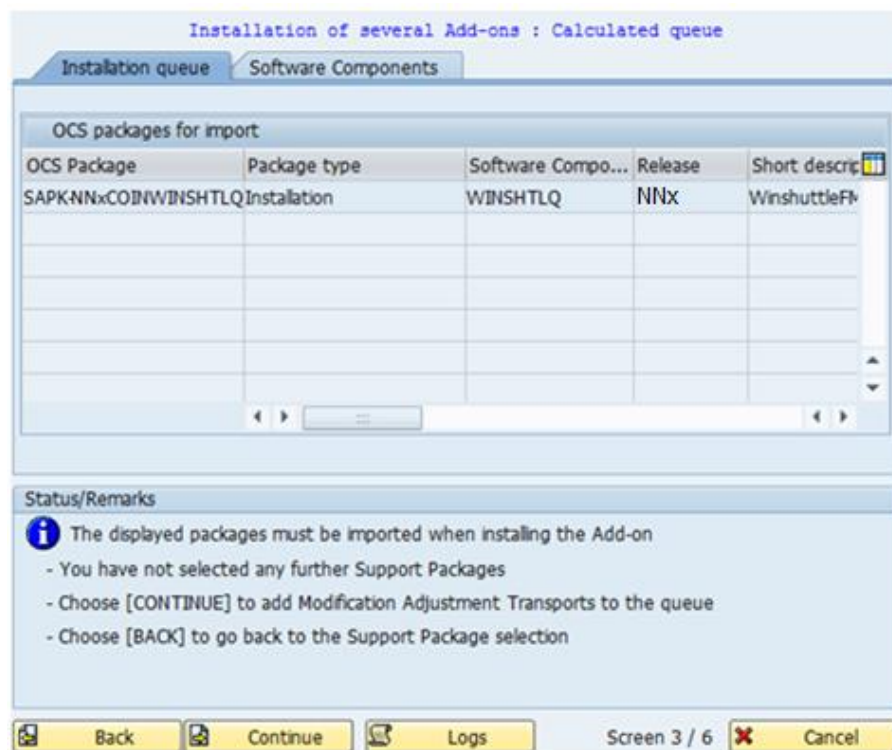


**Vx = 20.2**

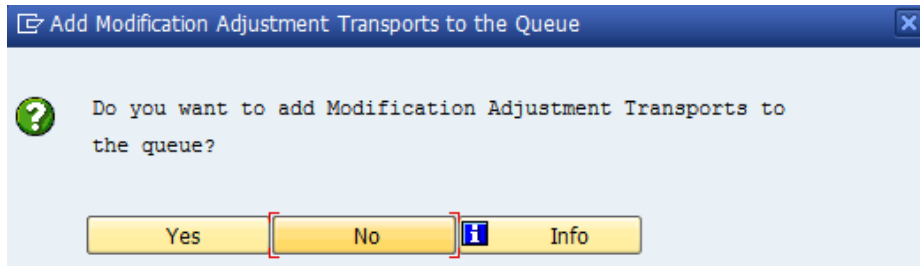
Select the **Add-on** and click **Continue**.



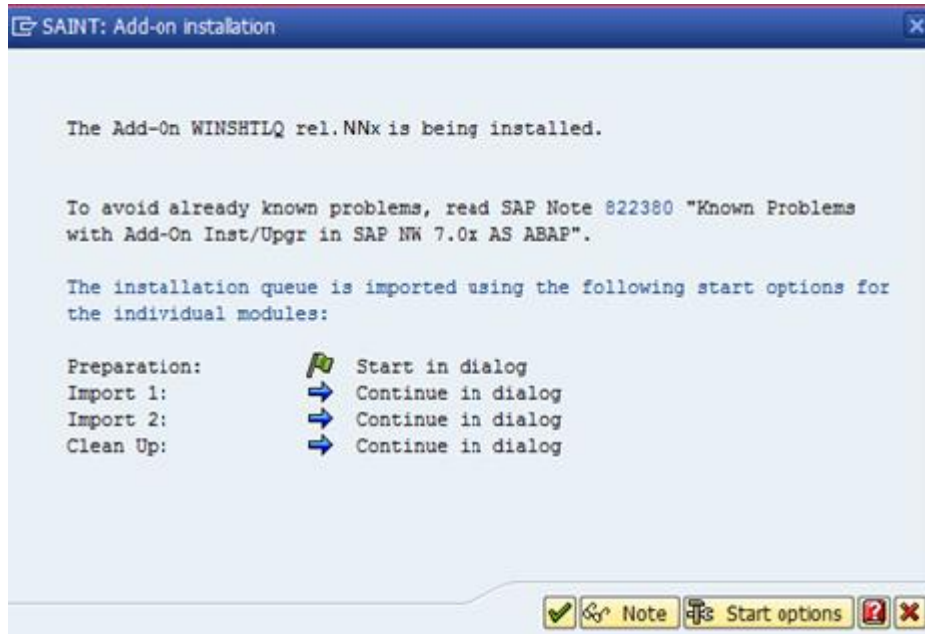
Click **Continue**.



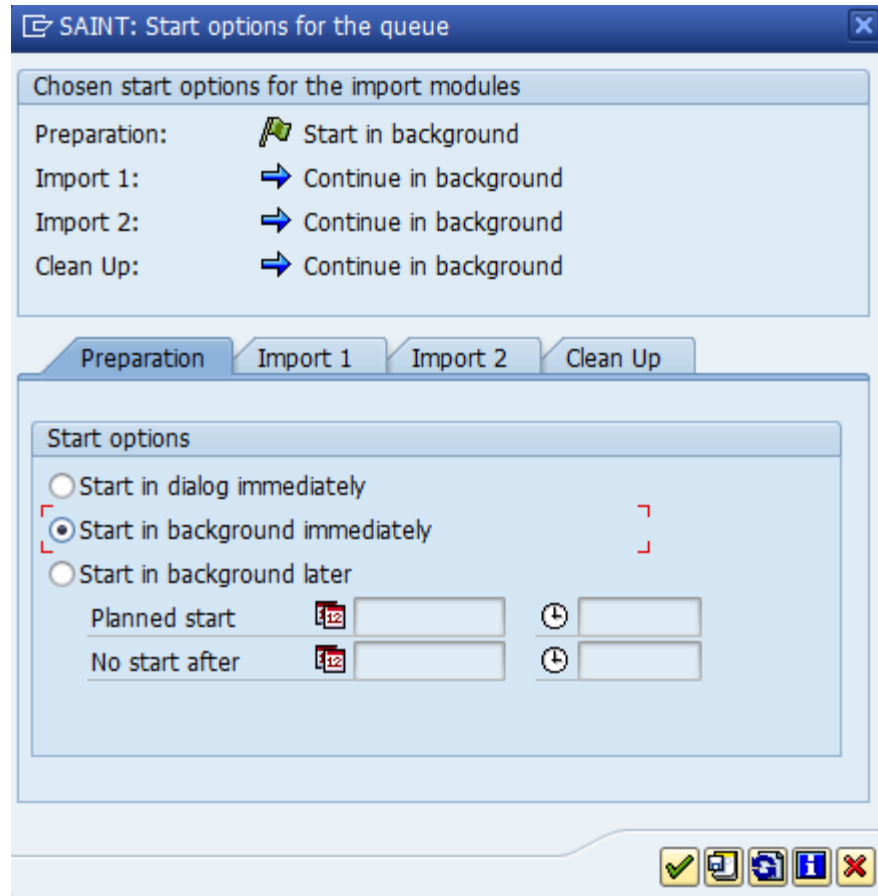
Click **Continue**.



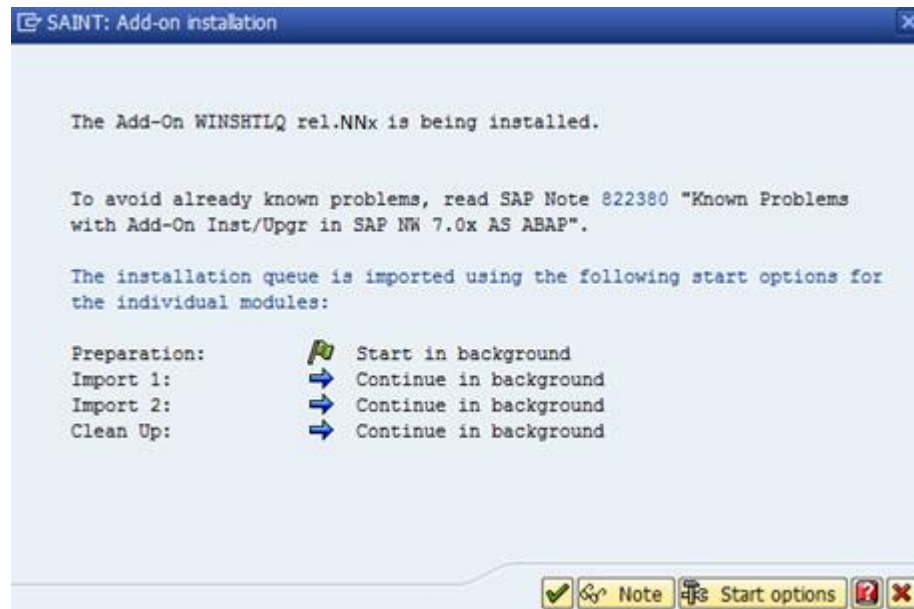
If this window appears, this component has an independent and unique namespace assigned by SAP. Click **No**.



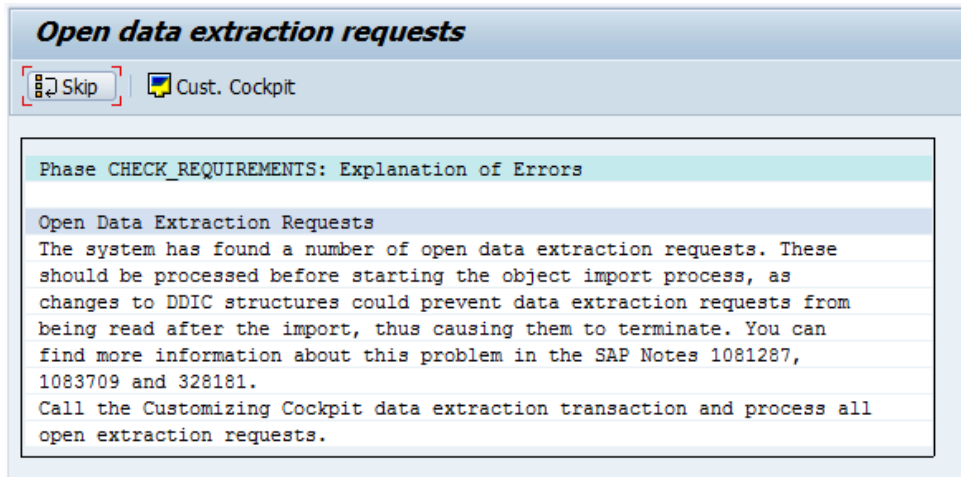
Click **Start options**.



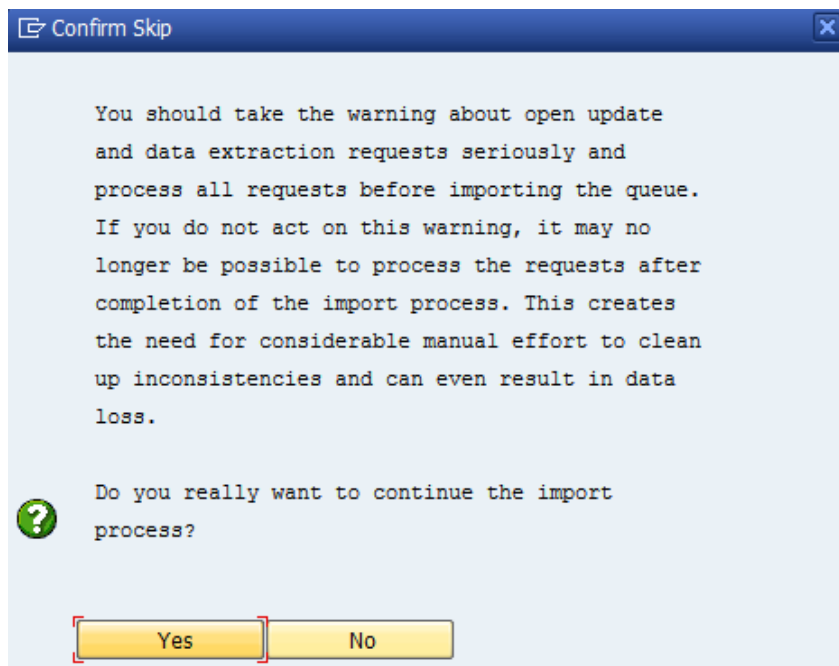
Select **Start in background immediately** and click the **Green Tick Mark** to continue.



Click **Import** (Green Tick mark) to continue.

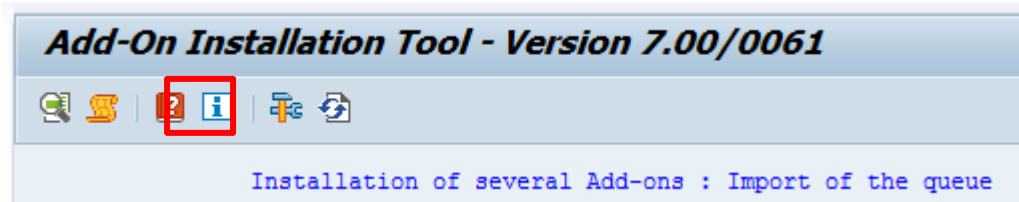
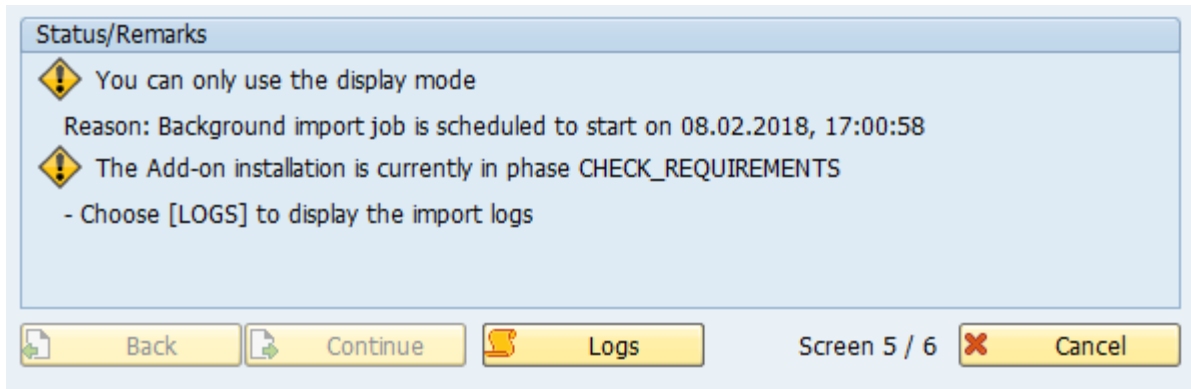


If this window appears, the add-on has independent unique namespace. Click **Skip**.

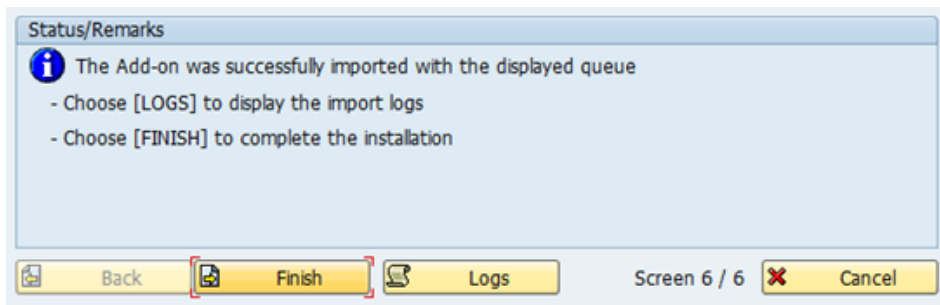


Click **Yes** to continue the import process.

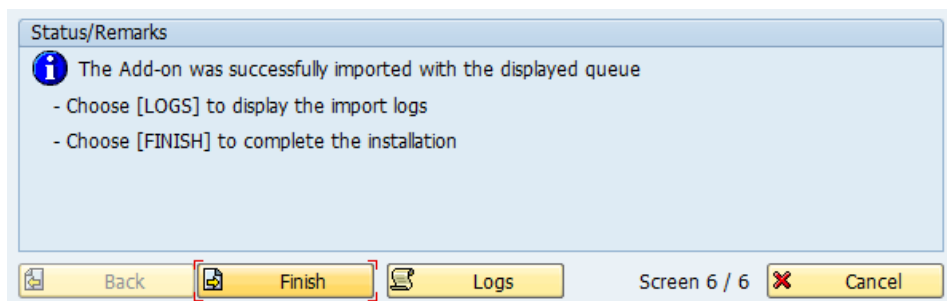




Click **Refresh** until the import finishes.



When the installation or upgrade finishes, see the **Logs**.



After you have checked the logs, go back to the previous screen and click **Finish** to complete the process.